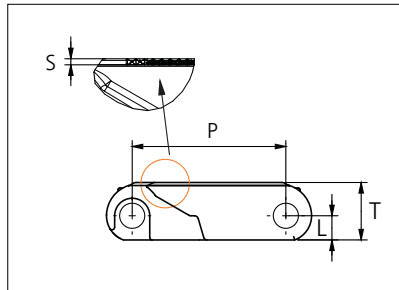


Plastic Modular Belt

Series **uni CPB** Type **Rough Embedded**



Straight running belt
 Nominal pitch: 50.8 mm (2.00 in)
 Surface type: Rough Embedded
 Surface opening: 0%
 Backflex radius: 85.0 mm (3.30 in)
 Pin diameter: 8.0 mm (0.31 in)

Belt material & color	POM-DI UV O W		mm	in		mm	in	
Pin and lock material & color	PBT-GR N	PA6.6 N	P (Nominal)	50.8	2.00	S	1.0	0.04
			L	8.0	0.31	T	18.0	0.71

Non standard material and color: See uni Material and Color Overview.

Belt width		Permissible tensile force (Belt/pin material)		Belt weight (Belt/pin material)		*Min. No. drive sprocket per shaft	Number of wear strips (Min. No.)	
		POM-DI UV/PBT-GR		POM-DI UV/PBT-GR			**Carry (pcs)	**Return (pcs)
mm	in	N	lbf	kg/m	lb/ft			
151	5.9	7826	1759	2.5	1.68	2	2	2
403	15.9	20956	4711	6.7	4.50	3	3	2
453	17.8	23556	5295	7.5	5.05	4	4	2
503	19.8	26156	5880	8.3	5.61	4	4	2
553	21.8	28756	6464	9.2	6.17	4	4	2
604	23.8	31408	7061	10.0	6.74	5	5	3
654	25.7	34008	7645	10.9	7.30	5	5	3
704	27.7	36608	8229	11.7	7.85	5	5	3
754	29.7	39208	8814	12.5	8.41	6	6	3
805	31.7	41860	9410	13.4	8.98	6	6	3
855	33.7	44460	9995	14.2	9.54	6	6	3
905	35.6	47060	10579	15.0	10.10	7	7	4
956	37.6	49712	11175	15.9	10.67	7	7	4

Additional standard belt widths are available in steps of 50.3 mm (1.98 in). Additional non-standard belt widths are available in steps of 16.8 mm (0.66 in).

1961	77.2	101972	22923	32.6	21.88	14	14	7
------	------	--------	-------	------	-------	----	----	---

Additional standard belt widths are available in steps of 50.3 mm (1.98 in). Additional non-standard belt widths are available in steps of 16.8 mm (0.66 in).

2966	116.8	154232	34671	49.2	33.09	20	20	10
------	-------	--------	-------	------	-------	----	----	----

General belt tolerance is +0/-0.4% at 23°C/73°F and 50% RH. For exact belt width contact Customer Service. Non standard belt width on request.

*Max. Load per Drive Sprocket. Belt material: POM-NLAS 2500 N (560 lbf), POM-NL 2500 N (560 lbf), PP 2500 N (560 lbf).

**Max. Spacing between wear strips, Carry: 152 mm (6 in); Return: 304 mm (12 in).

= Single Link

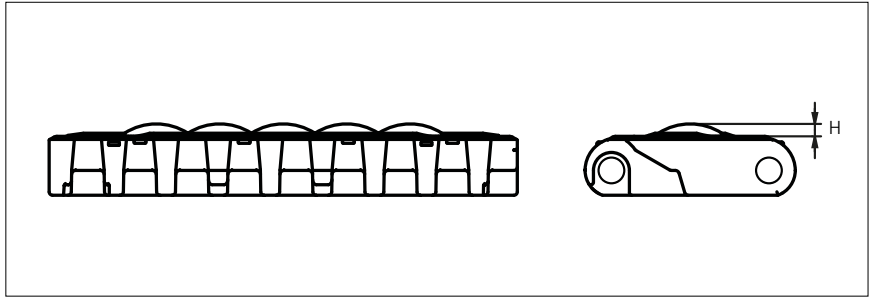
STANDARD

STRAIGHT RUNNING

PITCH 50.8 MM/2.00 IN

Accessories

Rubber Top

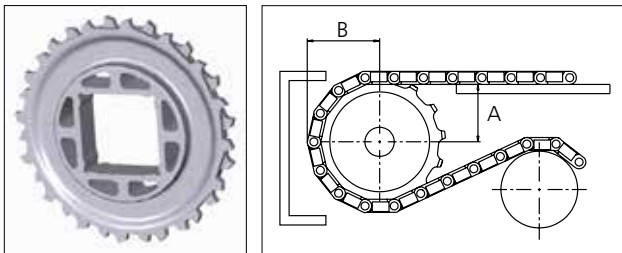


Type	Belt material & color	Rubber material & color	H		Link size	Width	
			mm	in		mm	in
Dome	PPI/UV W	03K K	4.0	0.16	K600	150.5	5.93

Sprocket

No of teeth	Bore size					Overall diameter		Pitch-diameter		Hub-diameter		Dimension A		Dimension B		Single row/One way	Double row/Two way	Molded PA6 LG	Machined PA6 N
	in	1.57	2.36	2.50	3.54														
	mm	40.0	60.0	63.5	90.0	mm	in	mm	in	mm	in	mm	in	mm	in				
Z16			■		■	263.8	10.39	260.4	10.25	160	6.29	119.7	4.71	138.7	5.46		x	x	

■ Molded sprocket



Non standard material and color: See uni Material and Color Overview.

Other sprocket sizes are available upon request.
 Two-part sprocket are available upon request.
 Round bores are always delivered with keyway.
 Other bore sizes are available upon request.
 uni Retainer Rings: See uni Retainer Ring data sheet.
 Width of tooth = 9.5 mm (0.37 in)
 Width of sprocket = 40.8.0 mm (1.60 in)

Max load per sprocket shown does not take bore size into account.
 Please also ensure that sufficient size shaft is chosen for corresponding load.

For correct sprocket position: See uni Assembly Instructions for uni CPB.
 For more detailed sprocket information, contact Customer Service.

